



## Übersicht deutsch

Winterthur gilt als saubere Stadt. Getrenntes Sammeln und Entsorgen von Abfällen ist zudem umweltschonend und hilft, Kosten zu sparen. Der Abfall-Leitfaden informiert, wann die Sammel-touren stattfinden, wo es Sammelstellen gibt und wie spezielle Materialien richtig zu entsorgen sind.



**ZUM STRASSENWÄHLER/  
ZUM ABFALL-ABC:**  
stadt.winterthur.ch/abfall

### ABFALL, DER ABGEHOLT WIRD

**Kehricht-Tour:** An welchen Wochentagen die Kehricht-Tour bei Ihnen vorbeikommt, können Sie im Tourenplan, auf der Website oder in der App nachlesen. Allgemeine Informationen zur Kehricht-Tour auf Seite 7.

**Grün-Tour:** Am gleichen Tag wie Ihre Kehricht-Tour. Den Wochentag Ihrer Grün-Tour finden Sie im Tourenplan, auf der Website oder in der App. Allgemeine Informationen zur Grün-Tour auf Seite 9.

**Papier-Tour:** Alle 14 Tage, jeweils am gleichen Wochentag wie Ihre Kehricht-Tour. Den Wochentag Ihrer Papier-Tour finden Sie im Tourenplan, auf der Website oder in der App. Die Daten der einzelnen Papier-Touren finden Sie auf dem Beilageblatt. Allgemeine Informationen zu den Papier-Touren auf Seite 10.

**Karton-Tour:** Informationen auf Seite 11.

### ABFALL, DER AUF ANFRAGE ABGEHOLT WIRD

**Grobmetall-Tour:** Alle 2 Monate, jeweils am letzten Mittwoch der ungeraden Monate. Den Zeitplan der Grobmetall-Tour finden Sie auf dem Beilageblatt. Allgemeine Informationen zur Grobmetall-Tour auf Seite 12.

### SAMMELSTELLEN

**Sammelstellen für wiederverwertbare Stoffe:** Informationen auf Seite 14 und 15.

**Sonderabfallsammlungen:** Informationen auf Seite 13.

**Recy-Hof/Detailhandel:** Informationen auf Seite 16.

## Vue d'ensemble français

Winterthur est considérée comme une ville propre. La collecte et l'élimination séparées des déchets sont, en outre, respectueuses de l'environnement et permettent d'économiser des coûts. Le guide des déchets indique les dates de tournées de collecte, les lieux des points de collecte et comment les matériaux spéciaux doivent être éliminés correctement.



**VERS LE SÉLECTEUR DE RUE/  
VERS L'ABC DES DÉCHETS:**  
stadt.winterthur.ch/abfall

### LES DÉCHETS À RAMASSER

**Tournée des ordures ménagères:** vous pouvez consulter dans le planning le jour du passage des ordures ménagères correspondant à votre domicile, sur le site web ou sur l'appli. Plus d'informations sur la tournée des ordures ménagères à la page 7.

**Tournée verte:** le même jour que le passage des ordures ménagères, consultation disponible dans le planning, sur le site web ou sur l'appli. Plus d'informations sur la tournée verte à la page 9.

**Tournée papier:** tous les 15 jours, le même jour que le passage des ordures ménagères. Vous pouvez consulter dans le planning le jour du passage de la collecte du papier correspondant à votre domicile, sur le site web ou sur l'appli. Vous trouverez les différentes dates des tournées papier sur l'annexe. Plus d'informations sur les tournées papier à la page 10.

**Tournée du carton:** plus d'informations à la page 11.

### DÉCHETS COLLECTÉS SUR DEMANDE

**Tournée des gros métaux:** tous les deux mois notamment le dernier mercredi des mois impairs. Consulter l'annexe pour trouver l'horaire sur le ramassage des gros métaux. Plus d'informations générales sur la tournée des gros métaux à la page 12.

### POINTS DE COLLECTE

**Points de collecte pour les matériaux recyclables:** Plus d'informations aux pages 14 et 15.

**Collectes de déchets spéciaux:** Plus d'informations à la page 13.

**Espace de recyclage/commerce de détail:** Plus d'informations à la page 16.

## Panoramica italiano

Winterthur è nota per essere una città pulita. Il sistema di raccolta differenziata e smaltimento dei rifiuti è ecologico ed efficiente, contribuendo anche a contenere i costi. La guida alla gestione dei rifiuti informa sulle date di raccolta, i punti di raccolta e le modalità corrette per lo smaltimento di materiali speciali.



**LE STRADE COINVOLTE/  
ABC DEI RIFIUTI:**  
stadt.winterthur.ch/abfall

### RACCOLTA DEI RIFIUTI

**Tour della spazzatura:** Consultare il piano dei tour sul sito web o tramite l'app per scoprire i giorni della settimana in cui il servizio di raccolta dei rifiuti passa da casa vostra. Per ulteriori informazioni sul tour della spazzatura, consultare la pagina 7.

**Green tour:** Avviene lo stesso giorno del tour della spazzatura.

Il giorno del green tour può essere consultato sul piano dei tour sul sito web o sull'app. Per ulteriori informazioni sul green tour, consultare la pagina 9.

**Tour della carta:** Avviene ogni 14 giorni, nello stesso giorno della raccolta rifiuti. Il giorno specifico della settimana può essere consultato sul piano dei tour sul sito web o sull'app. Le date dei singoli giri sono riportate sul foglio aggiuntivo. Ulteriori informazioni sul tour della carta sono disponibili sulla pagina 10.

**Tour del cartone:** Informazioni a pagina 11.

### RACCOLTA DEI RIFIUTI SU RICHIESTA

**Tour dei metalli grossolani:** Disponibile ogni due mesi, l'ultimo mercoledì di ogni mese dispari. Il calendario del tour del metallo grossolano è riportato nel foglio aggiuntivo. Per ulteriori informazioni, consultare la pagina 12.

### PUNTI DI RACCOLTA

**Punti di raccolta dei materiali riciclabili:** Informazioni alle pagine 14 e 15.

**Raccolta dei rifiuti pericolosi:** Informazioni a pagina 13.

**Recy-Hof/Commercio al dettaglio:** Informazioni a pagina 16.

## Overview english

Winterthur is considered a clean city. Separate collection and disposal of waste is also environmentally friendly and helps to save costs. The waste guide provides information on when the collection tours take place, where there are collection points and how to dispose special materials and substances correctly.



**SELECT YOUR STREET/  
TO THE WASTE ABC:**  
stadt.winterthur.ch/abfall

### WASTE, TO BE COLLECTED

**Waste Tour:** On which days of the week the waste tour passes you can read on the tour plan, on the website or in the app. General information about the waste tour on page 7.

**Green Tour:** On the same day as your waste tour. The weekday of your green tour can be found on the tour map on the website or in the app. General information about the green tour can be found on page 9.

**Paper Tour:** every 14 days, always on the same day of the week as your waste collection tour. The weekday of your paper tour can be found on the tour map on the website or in the app. The dates of the individual paper tours can be found on the enclosed sheet. General information about the paper tours can be found on page 10.

**Cardboard Tour:** Information on page 11.

### WASTE COLLECTED ON REQUEST

**Coarse metal Tour:** every 2nd month, on the last Wednesday of the odd months. The schedule of the coarse metal tour can be found on the enclosed sheet. General information about the coarse metal tours can be found on page 12.

### COLLECTION POINTS

**Collection points for recyclable substances:** Information on page 14 and 15.

**Special waste collections:** Information on Page 13.

**Recycling yard/Retail trade:** Information on Page 16.

## Panorama general spanisch

Winterthur está considerada una ciudad limpia. La recogida y eliminación selectiva de residuos también es respetuosa con el medio ambiente y ayuda a ahorrar costes. La guía de residuos informa sobre cuándo tienen lugar los recorridos de recogida, dónde hay puntos de recogida y cómo eliminar correctamente los materiales especiales.



**AL SELECTOR DE CALLES/  
AL ABC DE RESIDUOS:**  
[stadt.winterthur.ch/abfall](http://stadt.winterthur.ch/abfall)

### RESIDUOS QUE SE RECOGEN

**Recorrido de recogida de basuras:** Puede consultar qué días de la semana pasa por su casa el recorrido de recogida de basuras en el horario del recorrido, en la página web o en la app. Para obtener información general sobre el servicio de recogida de basuras, consulte la página 7.

**Recogida verde:** el mismo día que la recogida de residuos. Encontrará el día de la semana de su recorrido verde en el plan de recorridos, en el sitio web o en la app. Información general sobre el recorrido verde en la página 9.

**Recorrido en papel:** cada 14 días, el mismo día de la semana que su recogida de basuras. día de la semana que su recorrido de recogida de basuras. Encontrará el día de la semana de su recorrido en papel en el plan de recorrido, en el sitio web o en la aplicación. Encontrará las fechas de cada recorrido en papel en la hoja adicional. Información general sobre las visitas en papel en la página 10.

**Recorrido en cartón:** información en la página 11.

### RESIDUOS RECOGIDOS A PETICIÓN

**Recogida de metales pesados:** cada 2 meses, el último miércoles de los meses impares. El horario de la ruta de los metales pesados figura en la hoja adjunta. Información general sobre la recogida selectiva en la página 12.

### PUNTOS DE RECOGIDA

**Puntos de recogida de materiales reciclables:** Información en las páginas 14 y 15.

**Recogida de residuos especiales:** Información en la página 13.

**Patio de reciclaje/comercio al por menor:** Información en la página 16.

## Genel Bakış türkisch

Winterthur temiz bir şehir olarak kabul ediliyor. Atıkların ayrı toplanması ve bertaraf edilmesi aynı zamanda çevre dostudur ve maliyet tasarrufunada yardımcı olur. Atık rehberi, toplama turlarının ne zaman yapılacağı, toplama noktalarının nerelerde olduğu ve özel malzemelerin doğru şekilde nasıl bertaraf edilmesi gerektiği hakkında bilgiler vermektedir.



**SOKAKTKI SEÇİME/  
ABC ATIK'A DAİR:**  
[stadt.winterthur.ch/abfall](http://stadt.winterthur.ch/abfall)

### TOPLANACAK ATIKLAR

**Çöp turu:** Atık turunun size haftanın hangi günleri geleceğini tur programından, web sitesinden veya uygulamadan (App) öğrenebilirsiniz. Çöp turu hakkında genel bilgiler sayfa 7'de.

**Yeşil turu:** Çöp turunuzla aynı gün yapılıyor. Yeşil turunuzun yapılacağı haftanın gününü tur programında, web sitesinde veya uygulamada (App) bulabilirsiniz. Yeşil tur hakkında genel bilgiler sayfa 9'da.

**Kağıt turu:** her 14 günde bir defa, ve her seferinde aynı gün hafta içi çöp turunuzla birlikte yapılıyor Kağıt turunuz için haftanın gününü tur programında, web sitesinde veya uygulamada (App) bulabilirsiniz. Bireysel kağıt turlarının tarihlerini ek sayfada bulabilirsiniz. Kağıt turları hakkında genel bilgiler sayfa 10'dadır.

**Karton turu:** Bilgiler 11. sayfada.

### İSTEĞE GÖRE TOPLANAN ATIKLAR

**Kaba Metal turu:** 2 ayda bir, tek sayılı ayların son çarşamba günüdür. Kaba veya ağır metall turunun programını ek sayfada bulabilirsiniz. Kaba metal turu hakkında genel bilgiler sayfa 12'dedir.

### TOPLAMA YERLERİ

**Geri dönüştürülebilir maddeler için toplama noktaları:** Bilgiler 14 ve 15. sayfalarda

**Tehlikeli veya Özel atık toplama:**

Bilgiler 13. sayfada.

**Recy-Hof/Supermarket:**

Bilgiler 16. sayfada.

## Pregled serbisch/kroatisch

Winterthur vazi kao cist grad. Odvojeno sakupljanje i odlaganje otpada stiti covekovo okolinu i pomaze u smanjenju troskova. Otpad-uputstvo informise, kada se odzavaju ture prikupljanja, gde se nalaze mesta za sakupljanje i kako se specijalni materijali pravilno odlazu.



**TRAZENJE ULICA/  
OTPAD-ABC:**  
[stadt.winterthur.ch/abfall](http://stadt.winterthur.ch/abfall)

### OTPAD, KOJI CE BITI POKUPLJEN

**Smece tura:** kojim danima u nedelji dolazi kod vas smece tura, mozete da procitate u planu tura, na web stranici ili u aplikaciji. Opste informacije o smece turi na strani 7.

**Zeleno smece-tura:** istog dana kada i smece tura. Dan u nedelji kada se odnosi vase zeleno smece naci cete u planu tura, na web stranici ili u aplikaciji. Opste informacije o odnosenju zelenog smeca na strani 9.

**Papir tura:** svakih 14 dana, uvek istoga dana u nedelji, kada se odnosi vase smece. Dan kada je vasa papir tura, naci cete u planu tura, na web stranici ili u aplikaciji. Datume pojedinačnih papir tura naci cete u priloženom listu. Opste informacije o papir turama na strani 10.

**Karton tura:** informacije na strani 11.

### OTPAD, KOJI CE NA UPIT BITI POKUPLJEN

**Krupni metal tura:** svaka 2 meseca, uvek poslednje srede neparnih meseci. Vremenski raspored odnosenja krupnog metala naci cete u priloženom listu. Opste informacije o turi krupnog metala na strani 12.

### MESTA ZA SAKUPLJANJE

**Mesta odlaganja materijala za visekratnu upotrebu:** Informacije na strani 14 i 15.

**Sakupljanje specijalnog otpada:**

Informacije na strani 13.

**Reciklazno dvoriste/maloprodaja:**

Informacije na strani 16.

## Vështrim i përgjithshëm albanisch

Winterthuri konsiderohet si qytet i pastër. Mbledhja e mbeturinave të ndara dhe heqja e mbeturinave është ndër të tjera edhe në favor të ruajtjes së ambientit dhe ndihmon në kursimin e shpenzimeve. Udhëzuesi për mbeturinat informon se kur bëhet mbledhja e mbeturinave, ku ka vend-mbledhje të mbeturinave, si bëhet dhe si duhet të bëhet heqja e materialeve speciale



**PËR TË ZGJEDHUR RRRUGËN/  
ABC E MBETURINAVE:**  
[stadt.winterthur.ch/abfall](http://stadt.winterthur.ch/abfall)

### MBETURINAT QË MBLIDHEN

**Xhiroja për mbledhjen e mbeturinave:** Se në cilat ditë të javës bëhet mbledhja e mbeturinave tek Ju në kuadër të xhiros së mbeturinave, mund ta mësoni në planin e xhiros ë heqjes së mbeturinave në ueb faqen apo në App. Informacione të përgjithshme mbi xhiron e mbeturinave gjeni në faqen 7.

**Xhiroja e gjelbër:** Në të njëjtën ditë sikur edhe xhiroja e mbeturinave. Ditën e javës së xhiros së gjelbër e gjeni në planin e xhiros, në ueb faqe apo në App. Informacione të përgjithshme mbi xhiron e gjelbër në faqen 9.

**Xhiroja e letrave:** çdo 14 ditë dhe atë në të njëjtën ditë të javës sikur edhe në xhiron e mbeturinave. Ditën e javës së xhiros Tuaj të letrave e gjeni në planin e xhiros në ueb faqe apo në App. Datat e ditëve të veçanta të xhiros së letrave i gjeni në fletën e bashkëngjitur. Informacione të përgjithshme mbi xhirot e letrave i gjeni në faqen 10.

**Xhiroja e kartonit:** Informacione në faqen 11.

### MBETURINAT QË MBLIDHEN SIPAS KËRKESËS

**Xhiroja e metaleve:** çdo dy muaj dhe atë të mërkurës e fundit të muajve. Orarin e mbledhjes së mbeturinave në kuadër të xhiros së metaleve e gjeni në fletën e bashkëngjitur. Informacione të përgjithshme mbi xhiron e metaleve në Informacionet e përgjithshme të xhiros së metaleve në faqen 12.

### VENDGRUMBULLIMET

**Vendgrumbullimet e mbeturinave sërish të përpunueshme:** Informacione në faqet 14 dhe 15.

**Vendgrumbullimet e mbeturinave të veçanta:** Informacione në faqen 13.

**Recy-Hof/Detailhandel:**

Informacione në faqen 16.



arabisch نظرة عامة tygrinya ሙብርሃ

تعتبر ونترتور مدينة نظيفة. وإن جمع النفايات والتخلص منها بطريقة الفرز، هو أسلوب صديق للبيئة ويساعد على توفير التكاليف. يوفر دليل النفايات معلومات حول مواعيد جولات التجميع، وأماكنها وكيفية التخلص من المواد الخاصة بشكل صحيح.

ሺንተርቱር ከም ጽርይቲ ከተማያ ትፍለጥ። ጉሓፍ ብግቡእ ብብናቱ ፈላሊኻ ምጉሓፍ ንዕቃብ ከባብን ከምኡ፤ውን ወጻኢታት ንምቕጥብን ሓጋዚያ። እቲ ናይ ጉሓፍ መምርሒ መዓስ ጉሓፍ ከም ዝእከብን (ዝውሰድን) ከምኡ፤ውን ኣበይ ከይይኻ ክትጉሓፍ ከምትክእልን ፍልይ ዝበሉ ነገራት ከመይ ጌርኻ ብግቡእ ትጉሓፍምን ይሕብር።

إلى اسم الشارع عبر صفحة الإنترنت / حسب الأبجدية ABC لدليل النفايات: stadt.winterthur.ch/abfall



ብመሰረት ትንብረሉ ንደና ኣበይ ክትጉሓፍ ከም ኣበሬታ ብዛዕባ ዝተፈላለዩ ዓይነታት ጉሓፍ stadt.winterthur.ch/abfall

ኣብ 7ዓኻ መጽዮም ዝወስድዎ ጉሓፍ

**ጉሓፍ ዝመልእ ናይ ጥላስቲክ ከረጲት ዝእከበሉ፡** ኣበዮናይ መዓልቲ እኹም ነቲ ጉሓፍ ዝወስዱ ከምዝመዱ ኣብቲ ናይ ኢንተርኔት ገጽ ወይ ከኣ ኣብቲ ኣገጥሞብኩ ትክእሉ። ሓፈሻዊ ሓበሬታ ብዛዕባ ናይ ጉሓፍ ከረጲት ዝእከበሉ ኣብ ገጽ 7 ተወከሱ።

**ቀጠልያ ናይ ጉሓፍ ከንተይነር ዝእከበሉ፡** ኣብ ሓዲ መዓልቲ ምስቲ ናይ ጉሓፍ ከረጲት።

ኣበዮናይ መዓልቲ ቀጠልያ ናይ ጉሓፍ ከንተይነር ይውሰድ (ይእከብ) ኣብቲ ናይ ኢንተርኔት ገጽ ዘሎ ናይ ጉሓፍ መደብ ወይ ከኣ ኣብቲ ኣገጥሞብኩ ትክእሉ። ሓፈሻዊ ሓበሬታ ብዛዕባ ናይ ቀጠልያ ናይ ጉሓፍ ከንተይነር ዝእከበሉ ኣብ ገጽ 9 ተወከሱ።

**ወረቓት ዝጎሓፈሉ (ዝእከበሉ)፡** ኩሉ ግዜ ኣብ ነፍሲ ወከፍ 14 መዓልታት ሓይ ግዜ፤ እታ መዓልቲ ግን ኩሉ ግዜ ምስቲ ናይ ጉሓፍ ከረጲት ዝእከበሉ፤ ኣበዮናይ መዓልቲ ዝጎሓፍ ወረቓት ይውሰድ (ይእከብ) ኣብቲ ናይ ኢንተርኔት ገጽ ዘሎ ናይ ጉሓፍ መደብ ወይ ከኣ ኣብቲ ኣገጥሞብኩ ትክእሉ። እቲ ምዕላታት ናይ ወረቓት ዝጎሓፈሉ ኣብቲ ተወሳኺ (ኣብ መወዳእታ ዝርከብ ገጽ) ክትረክብዎ ትክእሉ። ሓፈሻዊ ሓበሬታ ብዛዕባ ናይ ወረቓት ጉሓፍ ዝእከበሉ ኣብ ገጽ 10 ተወከሱ።

**ናይ ባኮታት (ካርቶን) ጉሓፍ ዝእከበሉ፡** ሓበሬታ ኣብ ገጽ 11 ተወከሱ።

**ብጠለብ ዝጎሓፍ ጉሓፍ**

**ሓፈሻዊ ሓዲን ዝጎሓፈሉ (ዝእከበሉ)፡** ኣብ 2 ኣዋርሕ ሓይ ግዜ ከይት ኩሉ ግዜ ኣብታ ናይ መወዳእታ ረቡዕ ናይታ ሓይ ወርሒ ንኣብነት ወርሒ ጥሪ ኣልፍ ወርሒ መጋቢት ድሕረሒ ወርሒ ግንቦት እንዳበለ ይቐጽል። እቲ ናይ ግዜ መደብ ናይ ሓዲን ዝጎሓፈሉ ኣብቲ ተወሳኺ (ኣብ መወዳእታ ዝርከብ ገጽ) ክትረክብዎ ትክእሉ። ሓበሬታ ብዛዕባ ናይ ሓፈሻዊ ናይ ሓዲን ጉሓፍ ዝእከበሉ ኣብ ገጽ 12 ተወከሱ።

**ጉሓፍ ዝእከበሉ ቦታታት**

**መኣከቢ ንካልእ መዓላ ክውዕሉ ዝክእሉ ነገራት፡፡**

ንዝያዳ ሓበሬታ ኣብ ገጽ 14ን 15ን ተወከሱ።

**መኣከቢ ፍልይ ዝበሉ ዓይነታት ጉሓፍ፡፡**

ንዝያዳ ሓበሬታ ኣብ ገጽ 13 ተወከሱ።

**ካልኣይ ግዜ ተመስሪሎም ኣብ ጥቕሚ ዝውዕሉ ነገራት ዝእከብሉ፡፡**

ንዝያዳ ሓበሬታ ኣብ ገጽ 16 ተወከሱ።

القمامة التي سيتم جمعها  
جولة جمع أكياس النفايات: يمكنك معرفة أيام الأسبوع التي تمر فيها جولة جمع القمامة في شارعك، من النظر في جدول الجولات على الموقع الإلكتروني أو من التطبيق. هناك معلومات عامة عن جولة جمع القمامة في الصفحة 7.  
جولة جمع القمامة الخضراء (نفايات الخضر والفاواكه): تكون في نفس يوم جولة أكياس النفايات الخاصة بك (بشارعك).

يمكنك معرفة اليوم الإيسوعي للجولة الخضراء الخاصة بك من جدول الجولات على الموقع الإلكتروني أو من التطبيق. توجد معلومات عامة عن جولة جمع النفايات الخضراء في الصفحة 9.

جولة جمع الورق: كل 14 يوماً، دائماً في نفس يوم الأسبوع مثل جولة جمع القمامة الخاصة بك. يمكنك معرفة اليوم الإيسوعي لجولة الورق الخاصة بك من جدول الجولات على الموقع الإلكتروني أو من التطبيق. يمكنك الإطلاع على مواعيد كل جولات جمع الورق مفصلة على حدة من الورقة المرفقة. توجد معلومات عامة عن جولات جمع الورق في الصفحة 10.

جولة جمع الورق المقوى (الكرتون): المعلومات في الصفحة 11.

النفايات التي يتم جمعها عند الطلب  
جولة جمع (الخردة) القمع المعدنية الكبيرة: تكون كل شهرين، وذلك في يوم الأربعاء الأخير لكل الأشهر القردية. يمكنك الإطلاع على الجدول الزمني لجولة جمع الخردة المعدنية من الورقة المرفقة. معلومات عامة عن جولة الخردة المعدنية تجدها على الصفحة 12.

مراكز التجميع  
مراكز تجميع المواد القابلة لإعادة التدوير: توجد المعلومات على الصفحتين 14 و 15.  
جمع النفايات الخاصة:  
توجد المعلومات على الصفحة 13.  
مراكز إعادة التدوير/ ومراكز البيع بالمفرق:  
توجد المعلومات على الصفحة 16.

COLLECTION TOUR

The rubbish collection tour is organised weekly (see tour schedule plan or street selector via website/app).  
**Exception Old Town:** Old Town tour A always Mon./Thurs., Old Town tour B always Tues./Fri.

PREPARATION

- ◆ Prepare the Fee bags to be collected the evening before from 6.30 pm or prepare it by 6.45 am on the day of collection
- ◆ Exception Old Town: The Fee bags must be ready for collection on the same day of the collection tour by 09.00 am (it is not allowed to put the bags outside the day before the collection)
- ◆ Depositing the bags in underground containers or ordinary waste containers are allowed at any time

COMMERCIAL WASTE CONTAINER

For industrial, commercial and service companies we offer the possibility to recycle the waste in a commercial waste container.

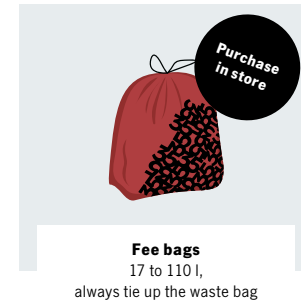
- ◆ Further information: stadt.winterthur.ch/abfall or waste telephone 052 267 68 68
- ◆ Registration for commercial waste containers: waste telephone 052 267 68 68 or E-mail abfall@win.ch

FEES

For the waste recycling the official Fee bags must be used. These can be obtained from retailers. (Migros, Coop, Denner, Aldi, etc.)

Fees waste bags Liter	Fr./piece
17 l	0.90
35 l	1.80
60 l	3.60
110 l	5.40

Commercial container	Fr.
Billing costs	according to weight
additional docking fees	0.28/kg
Emptying	4.- each



NOT PERMITTED

- ◆ Burning rubbish in the garden/chimney
- ◆ not to abuse the toilette or washbasin for waste disposal

NOTE

**Keep the way free for recycling vehicles:** Cut bushes that hangs into the street, park the car evenly towards the roadside, in case of construction work on the road, place the Fee bag for collection on the next road that's open for traffic.

# Bulk Waste



## COLLECTION TOUR

Bulk waste gets collected with the normal Waste Tour no need for registration. (see tour schedule plan or street selector via website/app)

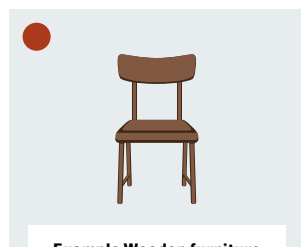
## PREPARATION

- ◆ Prepare Bulky waste for pick up the evening before as from 6.30 pm or deposit it on the collection day at the waste collection point by 6.45 am
- ◆ Exception Old Town: The Fee bags must be ready for collection on the same day of the collection tour by 09.00 am (it is not allowed to put the bags outside the day before)
- ◆ Shred objects as well as possible, dismantle big furniture (e.g. wardrobes)
- ◆ Soft materials (e.g. carpets, mattresses) max. 1.5 m long, tie together tightly with cord

## FEES

For bulky goods the official waste stamps must be used (the number of stamps placed on the goods are according to the weight of the waste and must be clearly visible on the bulky waste. Official waste stamps can be obtained from shops such as (Migros, Coop, Denner, Aldi, etc.).

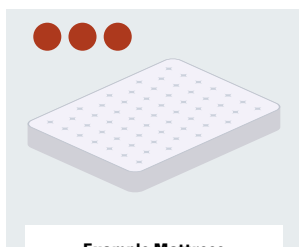
Weight	Number of stamps	Fr.
Up to 5 kg	1	1.80
Up to 10 kg	2	3.60
Up to 20 kg	3	5.40
Per additional 10 kg + 1		+ 1.80



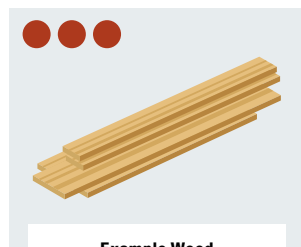
**Example Wooden furniture**  
Up to 5 kg: 1 stamp



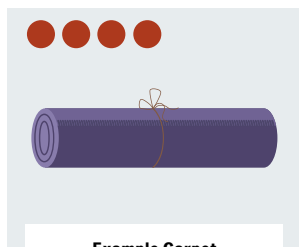
**Example Upholstered furniture**  
Up to 10 kg: 2 stamps



**Example Mattress**  
Up to 20 kg: 3 stamps



**Example Wood**  
Up to 20 kg: 3 stamps



**Example Carpet**  
Up to 30 kg: 4 stamps



**Example Sofa**  
2 stamps per seat

## ✓ ALLOWED

- ◆ Flammable materials such as wood or plastic
- ◆ Furniture, upholstered chairs
- ◆ Mattresses, carpets
- ◆ Chipboards
- ◆ Package materials

## ✗ NOT ALLOWED

- ◆ Hazardous waste
- ◆ Metal (e.g. bicycles, lawnmowers, etc.)
- ◆ Mineral waste (excavated material)
- ◆ Electrical and electronic appliances

## i NOTE

**Package material** can be disposed as bulky waste: Packed in a box, tied up and clearly labelled with bulky waste stamps.



# Green Tour

## COLLECTION TOUR

The green tour is done on a weekly basis – on the same day as the waste tour (see tour schedule plan or street selector via website/app).

**Exception Old Town:** weekly, every Wednesday

## FEES

The green tour is free of charge (calculated in the basic fees)

## PREPARATION

- ◆ Prepare the green waste to be collected the evening before from 6.30 pm or do the preparation on the day of collection by 6.45 am
- ◆ Exception Old Town: Green waste must be prepared on the day of Collection by 9.00 am (not allowed to do put it out the evening before)

- ◆ Place the green waste to be recycled in a green plastic container (will be emptied when container is 1/3 filled)
- ◆ Other containers such as baskets, pails and buckets etc. are not allowed and will not be emptied
- ◆ Loose branches and shrubs can be tied up for collection



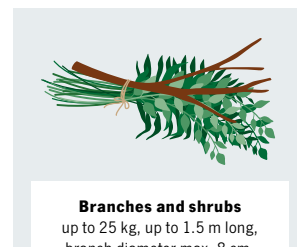
**Plastic container green**  
120 to 360 l,  
labelled with street/house no.



**Plastic container green**  
660 to 770 l,  
labelled with street/house no.



**Paper bag**  
11 litres, Fr. 5.–/10 pcs.  
Available at Superblock (Pionierstr. 7)



**Branches and shrubs**  
up to 25 kg, up to 1.5 m long,  
branch diameter max. 8 cm,  
tied together



**Degradable compost bags**  
(Compo bag with grid lines),  
need to be deposit in the container

## ✓ ALLOWED

- ◆ Garden waste, bouquets, potted plants, Christmas trees etc.
- ◆ Fruit and vegetable waste, kitchen waste, eggshells
- ◆ Food waste (meat, fish, bread, etc.), Baking waste
- ◆ Coffee and tea dregs incl. filter paper
- ◆ Animal hair and feathers, small animal dug

## ✗ NOT ALLOWED

- ◆ Plastic waste, plastic bags (incl. recyclable plastic)
- ◆ Glass, aluminium, metal, PET, batteries
- ◆ Stones, clay, ash, cigarette butts
- ◆ Paper, nappies, compostable crockery
- ◆ Coffee Pods



## COLLECTION TOUR

The paper tour is organised every 14th day (see tour schedule or street selector via website/app).

**Exception Old Town:** weekly, on Wednesdays

## PREPARATION

- ◆ Set out the paper for collection the evening before as from 6.30pm or set it out by 6.45 am on the day of collection.
- ◆ Exception Old Town: Paper to be set out by 09.00 am on day of collection (not allowed to set out the paper the evening before)

## FEES

The paper tour is free of charge (calculated in the basic fees)

- ◆ Bundle and tie the paper or place it loose in a yellow plastic Container ready for pickup
- ◆ Don't put the paper in carrier bags or boxes for pickup



**Paper bundles**  
tied up



**Plastic container yellow**  
120 to 360 litres,  
labelled with street/house no



**Plastic container yellow**  
660 bis 770 l,  
labelled with street/house no

## ✓ ALLOWED

- ◆ Waste paper
- ◆ Newspapers, magazines
- ◆ Magazines, catalogues, brochures without coating
- ◆ Envelopes (also with window)
- ◆ Paperback books
- ◆ Book pages without cover

## ✗ NOT ALLOWED

- ◆ Cardboard products
- ◆ Carrier Bags
- ◆ Plastic films
- ◆ Plastic-coated paper (e.g. wrapping paper)
- ◆ Book covers
- ◆ Napkins, household paper

## i NOTE

We recommend for the paper tour the purchase of plastic containers. Large quantities of paper can be recycled directly at Recy-Hof (e.g. Maag)



## COLLECTION TOUR

The cardboard tour is organised every 14 days (see tour schedule or street selector via website/app).

**Exception Old Town:** weekly, on Wednesday

## PREPARATION

- ◆ Set out the cardboard for collection the evening before as from 6.30 pm or set it out by 6.45 am on the day of collection
- ◆ Exception Old Town: Cardboard to be set out by 09.00 am on day of collection (not allowed to set it out the evening before)

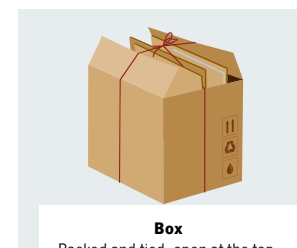
## FEES

The cardboard tour is free of charge (calculated in the basic fees)

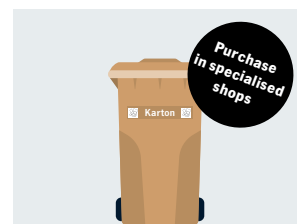
- ◆ Bundle and tie cardboard flat, place it in a box (open at the top) and tie it up or place it loose but folded, in the brown plastic containers



**Bundles**  
Flat bundled and tied



**Box**  
Packed and tied, open at the top,  
do not use adhesive strips



**Plastic container brown**  
120 to 360 l,  
labelled with street/house no



**Plastic container brown**  
660 to 770 l,  
labelled with street/house no

## ✓ ALLOWED

- ◆ Cardboard boxes
- ◆ Corrugated cardboard
- ◆ Egg carton
- ◆ Fruit and vegetable cartons
- ◆ Paper carrier bags
- ◆ Dirty pizza boxes

## ✗ NOT ALLOWED

- ◆ Coated/dirty cardboard
- ◆ Beverage cartons (Tetra pack)
- ◆ Frozen food packaging, Folders
- ◆ Frozen food packaging
- ◆ Folders
- ◆ Paper, Styrofoam
- ◆ Plastic products

## i NOTE

We recommend for the cardboard tour the purchase of plastic containers. Large quantities of paper can be recycled directly at Recy-Hof (e.g. Maag)



## Coarse Metal Tour



### COLLECTION TOUR

The coarse metal tour is organised every 2nd month, on the last Wednesday of every odd-numbered month (January, March, May, July, September, November; see tour schedule plan or street selector via website/app).

### PREPARATION

- ◆ Bring the coarse metal the evening before 6.30 pm or on the day of collection from 6.45 am to the rubbish collection point
- ◆ Exception Old Town: Coarse metal to be set out by 09.00 am on day of collection (not all allowed to set it out the evening before)
- ◆ The items must contain at least 50% metal
- ◆ Maximum weight per item: 25 kg

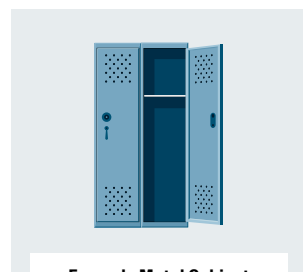
### FEES

The coarse metal tour is free of charge (calculated in basic fees).

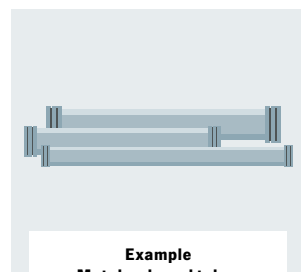
### REGISTRATION

The day before until 04.00 pm

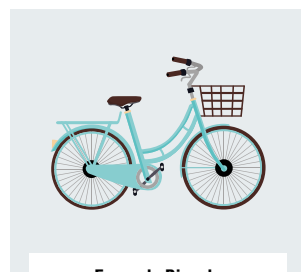
- ◆ Waste telephone: 052 267 68 68
- ◆ E-mail: [abfall@win.ch](mailto:abfall@win.ch)
- ◆ **Online Registration:** [stadt.winterthur.ch/abfall](http://stadt.winterthur.ch/abfall)
  - > Coarse Metal Tour
  - > Online Registration form



**Example Metal Cabinet**  
Max. 25 kg



**Example Metal rods and tubes**  
Max. 1.5 m long



**Example Bicycle**  
at least 50% metal

### ✓ ALLOWED

- ◆ Metal furniture
- ◆ Household items made of metal (baking tins, pans, frying shovels, draining sieves, drying rack for clothes)
- ◆ Screws and tools made out of metal
- ◆ Metal fences
- ◆ Car rims without tyres
- ◆ Bicycles, mopeds (with empty tank)

### ✗ NOT ALLOWED

- ◆ Tinplate cans
- ◆ Aluminium packaging
- ◆ Electrical and electronic devices (blenders, Hoover, television, radios, computers, Monitors)
- ◆ Gas cylinders
- ◆ Fire extinguishers
- ◆ Lead
- ◆ Soda bottles

### i NOTE

Small metal such as pans etc. can also be disposed at the collection points

## Hazardous Waste



### MOBILE HAZARDOUS WASTE COLLECTIONS

Actually, the retail shops are responsible for taking back hazardous waste. In addition, the city of Winterthur offers further options to bring back hazardous waste. In the Waste ABC on the website, it shows formation on which material can be dropped.

Date	Time	Area	Place
<b>2024</b>			
Mon. 13.05.   07.10.24	08.00–10.00	Deutweg	Pflanzschulstrasse, Parkplatz beim Hallenbad
Mon. 13.05.   07.10.24	11.30–13.30	Seen	Bacheggliweg, Schulhaus Büelwiesen
Tues. 14.05.   08.10.24	08.00–10.00	Veltheim	Flüelistrasse, Parkplatz Sportplatz
Tues. 14.05.   08.10.24	11.30–13.30	Wülflingen	Eulachstrasse (Marktplatz) beim Lindenplatz
Wed. 15.05.   09.10.24	08.00–10.00	Töss	Bahnhof Töss, vor Schuppen
Wed. 15.05.   09.10.24	11.30–13.30	Stadt	Neumarktplatz
Thurs. 16.05.   10.10.24	08.00–10.00	Oberwinterthur	Ecke Stadlerstrasse/Stofflerenweg
Thurs. 16.05.   10.10.24	11.30–13.30	Rosenberg	Parkplatz gegenüber Buchackerstrasse 43
Fri. 17.05.   11.10.24	08.00–10.00	Hegi	Barbara-Reinhart-Strasse, Parkplatz bei Halle 710
Fri. 17.05.   11.10.24	11.30–13.30	Dätt nau	Hündlerstrasse 14, Schulhaus Laubegg
<b>2025</b>			
Mon. 05.05.   06.10.25	08.00–10.00	Deutweg	Pflanzschulstrasse, Parkplatz beim Hallenbad
Mon. 05.05.   06.10.25	11.30–13.30	Seen	Bacheggliweg, Schulhaus Büelwiesen
Tues. 06.05.   07.10.25	08.00–10.00	Veltheim	Flüelistrasse, Parkplatz Sportplatz
Tues. 06.05.   07.10.25	11.30–13.30	Wülflingen	Eulachstrasse (Marktplatz) beim Lindenplatz
Wed. 07.05.   08.10.25	08.00–10.00	Töss	Bahnhof Töss, vor Schuppen
Wed. 07.05.   08.10.25	11.30–13.30	Stadt	Neumarktplatz
Thurs. 08.05.   09.10.25	08.00–10.00	Oberwinterthur	Ecke Stadlerstrasse-Stofflerenweg
Thurs. 08.05.   09.10.25	11.30–13.30	Rosenberg	Parkplatz gegenüber Buchackerstrasse 43
Fri. 09.05.   10.10.25	08.00–10.00	Hegi	Barbara-Reinhart-Strasse, Parkplatz bei Halle 710
Fri. 09.05.   10.10.25	11.30–13.30	Dätt nau	Hündlerstrasse 14, Schulhaus Laubegg

### HAZARDOUS WASTE COLLECTION CENTRE RIET FROM THE COMPANY CRIDEC

#### Location

Deponiestrasse 5, 8404 Winterthur  
052 243 12 36, [www.cridec.ch](http://www.cridec.ch)

#### Opening hours

Mon. to Thurs. 08.00–12.00 | 13.00–16.00  
Fri. 08.00–12.00

#### Materials

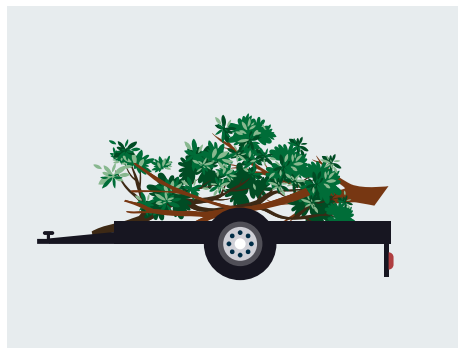
- ◆ Complete list per location via QR-Code



#### i NOTE

Dropp off Fees, Dropp off only by appointment

## Collection Points



### KOMPOGAS WINTERTHUR AG, WINTERTHUR

Large quantities of green waste can be disposed at Kompogas Winterthur AG in Oberwinterthur.

#### Materials

- ◆ Green waste according to the acceptance list

#### Location

Deponiestrasse 2, 8404 Winterthur  
052 242 57 24

[www.axpo.com/kompogas](http://www.axpo.com/kompogas) > Standort

#### Opening hours

##### April until November

Mon. to Thurs. 07.00–12.00 | 13.00–17.00

Fri. 07.00–12.00 | 13.00–16.00

##### December until March

Mon. to Thurs. 08.00–12.00 | 13.00–17.00

Fri. 08.00–12.00 | 13.00–16.00

#### **i** NOTE

Disposal against fees



### DEPONIE RIET, WINTERTHUR

The “Deponie Riet” in Oberwinterthur accepts waste materials according to the waste ABC on the website of the City of Winterthur from businesses, industrial companies as well as from private individuals living in Winterthur and the surrounding area. Let us advise you before you make your delivery.

#### Materials

- ◆ Small quantities of building rubble, Eternit, ceramics, stoneware

#### Location

Deponiestrasse 9, 8404 Winterthur  
052 267 24 70

[stadt.winterthur.ch/abfall](http://stadt.winterthur.ch/abfall) > Deponie Riet

#### Opening hours

Mon. to Fri. 07.00–11.30 | 13.00–16.30

We close 1 hour earlier on days before public holidays. Closed between Christmas and New Year

#### **i** NOTE

Direct deliveries are possible against a minimum fee of Fr. 10.–



### WASTE RECYCLING FACILITY (KVA), WINTERTHUR

Large quantities of combustible waste can be delivered directly to the KVA from the City of Winterthur, operated by Stadtwerk Winterthur. Let us advise you before you make your delivery

#### Materials

- ◆ Waste ABC online, KVA and waste tour

#### Location

Scheideggstrasse 50, 8404 Winterthur  
052 267 31 00

[stadtwerk.winterthur.ch](http://stadtwerk.winterthur.ch) > Kehrichtverwertung

#### Opening hours

Mon. to Fri. 07.00–16.30

Sat. 08.00–11.00

#### **i** NOTE

The costs of the recycling fees for the various items can be found on the website. Per delivery a minimum fee will be charged. For small quantities of rubbish it is worth using the regular waste collection service from the City of Winterthur.

## Collection Points



### ANIMAL CARCASS COLLECTION

#### Domestic and small wild animals

In the city of Winterthur there are animal carcass collection centres with cold storage cells for carcasses of pets and small wild animals up max. 10 kg (cats, guinea pigs, dogs, foxes, etc.) at the following locations:

- ◆ A: Kehrackerstr. 7, vis-à-vis ehem. Zeughaus Altstadt
- ◆ B: Schaffhauserstr. 215, Werkhof A1 Rosenberg
- ◆ C: Rietbergstrasse, Kleintieranlage Riethof, Oberwinterthur
- ◆ D: Sägeweg 11, Revierstützpunkt, Seen
- ◆ E: Auwiesenstr. 49, Revierstützpunkt, Töss
- ◆ F: Rappstr. 3, Revierstützpunkt, Wülflingen

#### Large animals

Carcasses of large animals (up to a maximum of 200 kg) can be handed in at the regional animal carcass collection centre Riet (REKAS) of the city of Winterthur

#### Location

Deponiestrasse 7, 8404 Winterthur

#### Opening hours

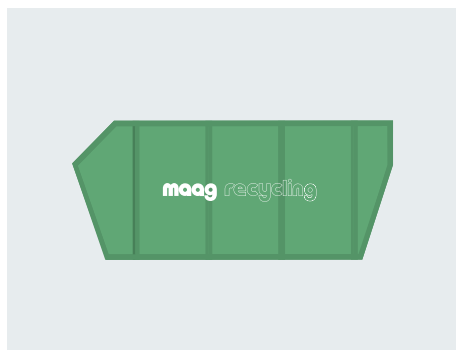
Mon. to Fri. 10.30–11.00

#### **i** NOTE

Deliveries to the REKAS are subject to a fee (Fr. 10.-/40 kg)



## Collection Points



### DETAIL TRADE

In stores such as Coop, Migros, Lidl or specialised electrical appliance shop, you can return purchased items such as PET bottles, batteries, plastic bottles, energy-saving light bulbs and electrical appliances free of charge for an uncomplicated recycling.

### Materials

- ◆ Pet beverage bottles, plastic bottles
- ◆ Batteries, filter cartridges
- ◆ Energy-saving light bulbs
- ◆ Electrical waste
- ◆ Coffee capsules
- ◆ CD/DVD DISCS
- ◆ Other recyclable materials

### Location

Stores in your area

### Opening hours

See the respective website.

### **i** NOTE

Further information on the respective website

### RECY-HOF

Further disposal options are offered by the used material trade (AH). Of great importance in conjunction with this is the recycling centre for private customers, Maag Recycling AG in Winterthur

### Materials

- ◆ electrical waste, waste containing mercury, varnishes, paints, glues, gas and pressurised cylinders with valve, valve\*, fire extinguishers\*, room spray\*, spray deodorant\*, aerosol cans\*, medicines, solvents, chemical waste, substances subject to the Narcotics Act (\* Small quantities small businesses)
- ◆ Complete list per location via QR code

### Location

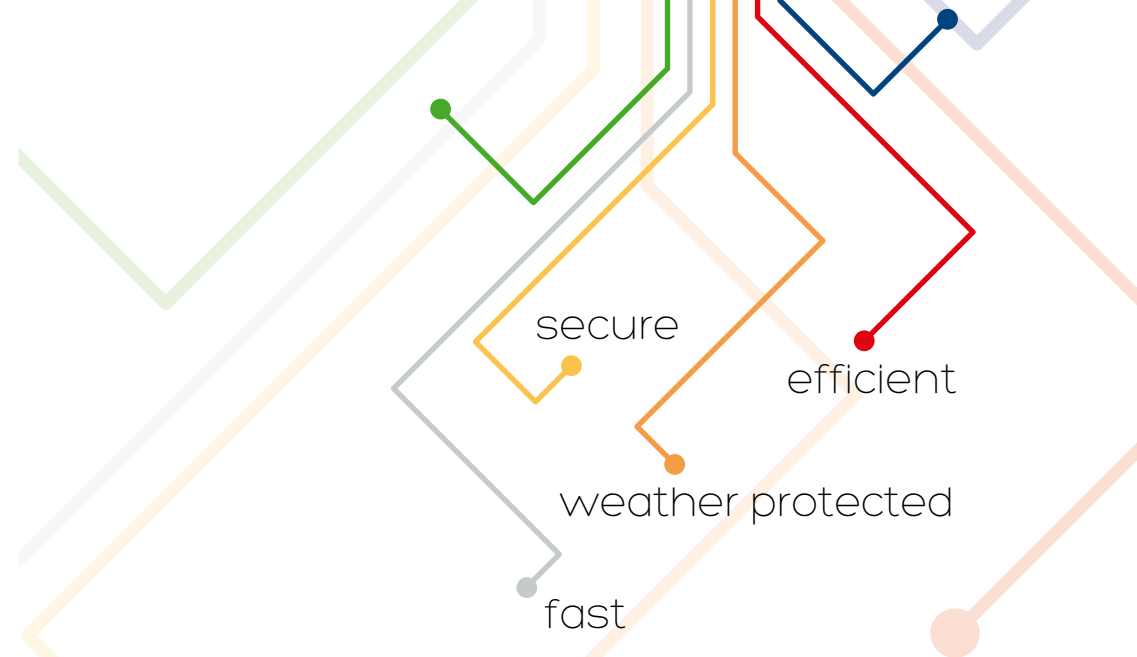
Maag Recycling AG  
Werkstrasse 12, 8400 Winterthur  
052 235 02 92, [www.maag-recycling.ch](http://www.maag-recycling.ch)

### Opening hours

Mon. to Wed.	07.15–12.00   13.15–17.00
Thurs.	07.15–12.00   13.15–19.00
Fri.	07.15–12.00   13.15–16.00
Sat.	08.00–12.00

### **i** NOTE

Detailed information about materials and prices can be found on the website



# For the sake of the environment - for the sake of us all

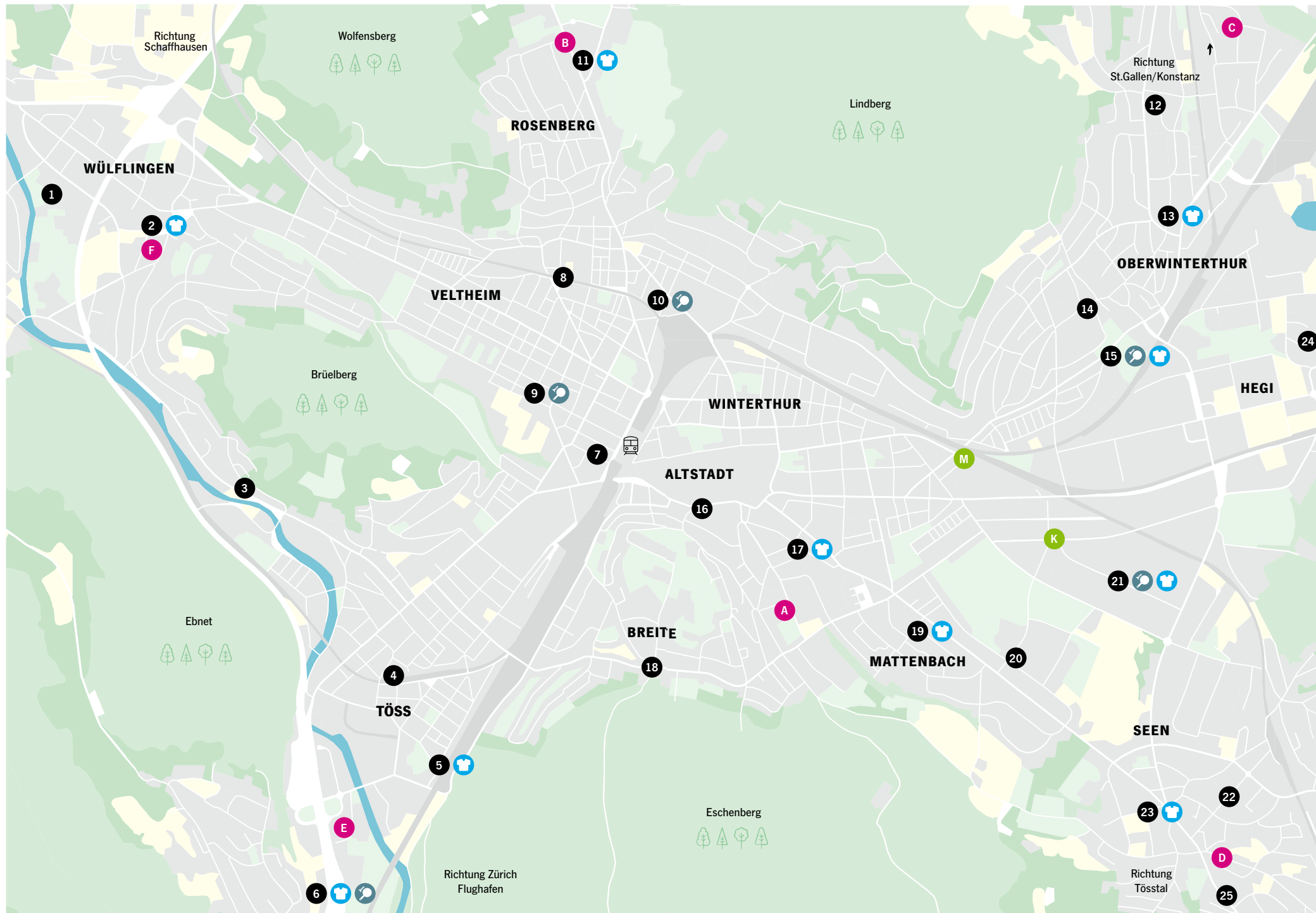
At our recycling centre, you can dispose batteries, organic waste, non-ferrous metals, scrap iron, electrical and electronic waste, glass, plastic, oil, paper, textiles and much more, cheap and in an environmentally friendly way.

Come along and find out for yourself how useful and simple recycling works.



**maag recycling**

Maag Recycling AG | Werkstrasse 12 | 8400 Winterthur  
Telefon +41 (0)52 235 02 92 | [www.maag-recycling.ch](http://www.maag-recycling.ch)



## Index Collection Points

Bottles and comestibles glass, metals, aluminium, small batteries and oils are recyclable and can be recycled at the separate collection points. Separate collection points are not a recycling centres or landfill sites. Everything except brown and white glass belongs to green glass.

The dumping of **household waste, bulky waste, PET and electrical appliances** are **forbidden**. For this reason, the collection points are **monitored by video!**

### TIMES OF USE

On weekdays from 7.00 to 19.30. On Sundays and public holidays forbidden.

### SEPARATE COLLECTION POINTS

- 1 Badi Wülflingen**  
Wässerriesenstrasse
- 2 Coop Wülflingen**  
Eulachstrasse
- 3 Schlosstal**  
Schlosstalstrasse, vis-à-vis Aldi
- 4 Bahnhof Töss**  
Reutgasse
- 5 Eichliacker**  
Eichliackerstrasse/Krummackerstrasse
- 6 Dätttau**  
Dättnauerstrasse
- 7 Neuwiesen**  
Gertrudstrasse
- 8 Wiesenstrasse**  
Wiesenstrasse/Feldstrasse
- 9 Schützenwiese**  
Bleichstrasse
- 10 Kiesstrasse**  
Kiesstrasse
- 11 Einkaufszentrum Rosenberg**  
Seuzacherstrasse
- 12 Zinzikon**  
Stadlerstrasse/Stofflerenweg
- 13 Guggenbühl**  
Guggenbühlstrasse, hinter Migros
- 14 Dorf Oberi**  
Römerstrasse/Unterwegli
- 15 Talwiesen**  
Frauenfelderstrasse/Talwiesenstrasse
- 16 Technikum**  
Technikumstrasse/Turmhaldenstrasse

- 17 Teuchelweiher**  
Obermühlestrasse/Stadtfallenweg
- 18 Breite**  
Breiteplatz
- 19 Talgut**  
Talgutstrasse, beim Busdepot
- 20 Gutschick**  
Scheideggstrasse 6
- 21 Grüze-Markt\***  
Rudolf-Diesel-Strasse
- 22 Shopping Seen**  
Kanzleistrasse
- 23 Coop Seen**  
Tösstalstrasse/Steinackerweg
- 24 Coop Hegi**  
Stäffelstrasse, PP Coop
- 25 Sennhof**  
Bahnhof Sennhof

### Coarse Metal Collection Points

### Old Clothes Collection Points

- M Maag Recycling AG**  
Werkstrasse 12

- K Kehrichtverwertungsanlage (KVA)**  
Scheideggstrasse 50

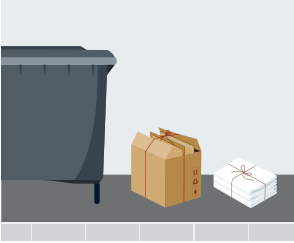
### ANIMAL CARCASS COLLECTION POINTS

- A** Kehrackerstrasse 7, vis-à-vis ehemaligem Zeughaus Altstadt
- B** Schaffhauserstrasse 215, Werkhof A1, Rosenberg, Kantonspolizei
- C** Rietbergstrasse, Kleintieranlage Riethof, Oberwinterthur
- D** Sägeweg 11, Revierstützpunkt, Seen
- E** Auwiesenstrasse 49, Revierstützpunkt, Töss, nahe Schwimmbad
- F** Rappstrasse 3, Revierstützpunkt, Wülflingen, nahe Lindenplatz

### \* EXCEPTION:

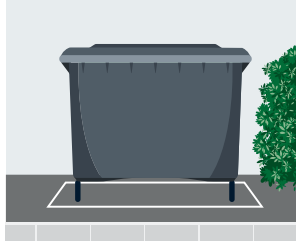
The times of the collection points in shops are according to the opening hours

## Tips & Tricks



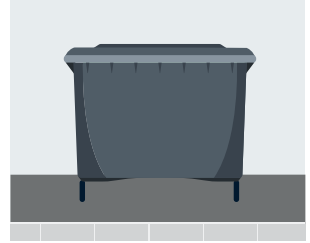
### PREPARATION OVERVIEW

Arrange the waste decently next to each other. Bags are not to be placed on top of the container.



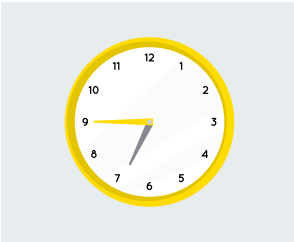
### CONTAINER PLACEMENT

Place your container in the designated place. For easy handling, the site is asphalted and has no shoulder to the road or to the pavement.



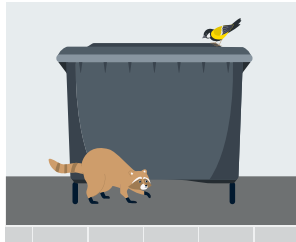
### PLASTIC CONTAINER

We exclusively use the lightweight plastic containers and no more metal containers. This makes it easier to empty the containers.



### PREPARED BY 06.45 AM

Deposit the waste punctually at the designated place. This way we can ensure that it gets collected on the waste collection day.



### PROTECTION AGAINST ANIMALS

Dispose the waste neatly in the suitable container so that everything is well protected from animals.



### CORRECTLY TIED

Tie the cardboard and paper compactly together. This will make the disposal much easier for us, especially on rainy days.



### COMPOSTABLE

Please only dispose compostable bags in green containers, no plastic bags!



### DELIVERIES

Please ensure that the streets are kept free on the waste collection day (e.g. don't order heating oil or handworkers on the waste collection day)



